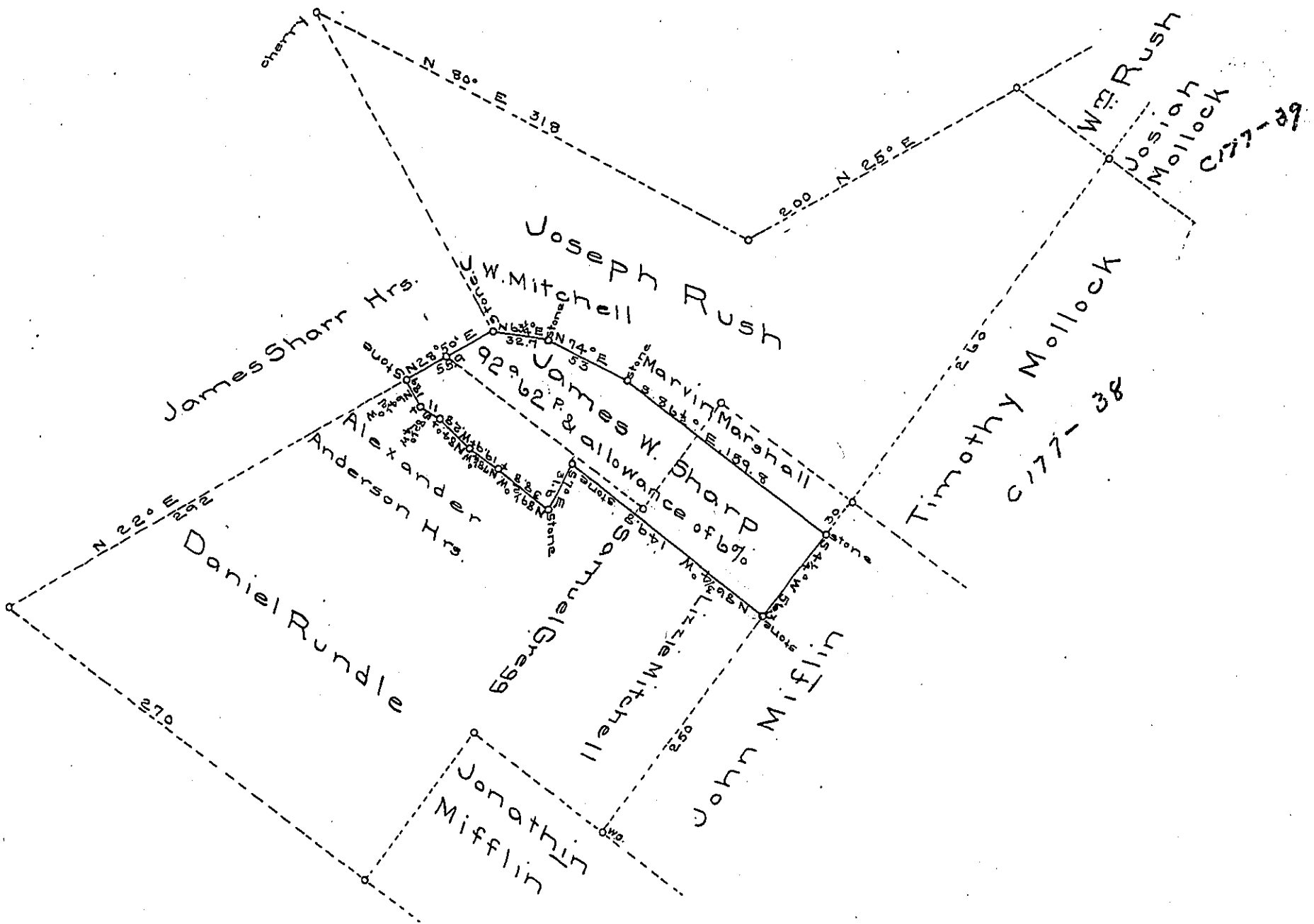


FORM No. 1.



A draft of a tract of land situated in the township of Big Beaver and County of Beaver containing ninety two (92) acres, 62 perches and allowance of six per cent for roads, etc. ^{for James W. Sharp} Surveyed the first day of July 1898 being part of two larger tracts originally surveyed in pursuance of ^{two} warrants granted to Joseph Rush and Daniel Rundle dated the 14th day of April, 1792.

Michael Baker
County Surveyor

To James W. Latta Esq.
Secretary of Internal Affairs }

IN TESTIMONY that the above is a copy of the original remaining on file in the Department of Internal Affairs of Pennsylvania, made conformably to an Act of Assembly approved the 16th day of February, 1833, I have hereunto set my Hand and caused the Seal of said Department to be affixed at Harrisburg, this eighteenth day of December 1906.

Leas R. Brown
Secretary of Internal Affairs.